

# Asbury Medical Building

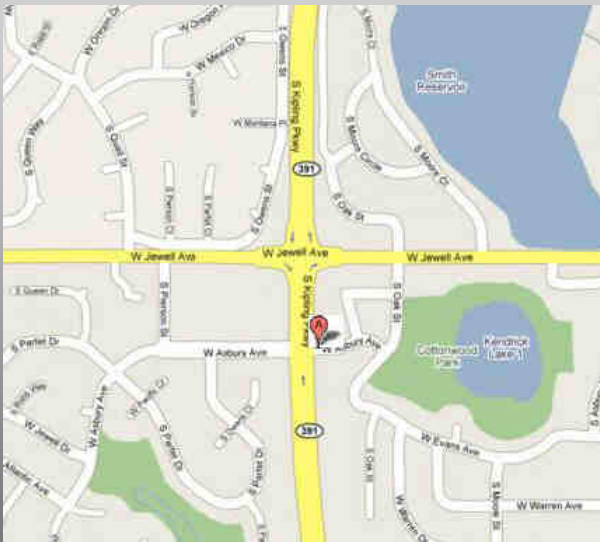


**10881 W Asbury Ave  
Lakewood, CO 80227**

**Office Space for Lease  
\$18.00—\$21.00 Full Service**

## Features:

- 2 Story medical / Office building
- 14,011 Square feet
- Parking Ratio of 4.50 / 1,000 SF
- High Visibility
- Scenic Views of lake & park
- One block East of Kipling & south of Jewell Ave



## Available Units

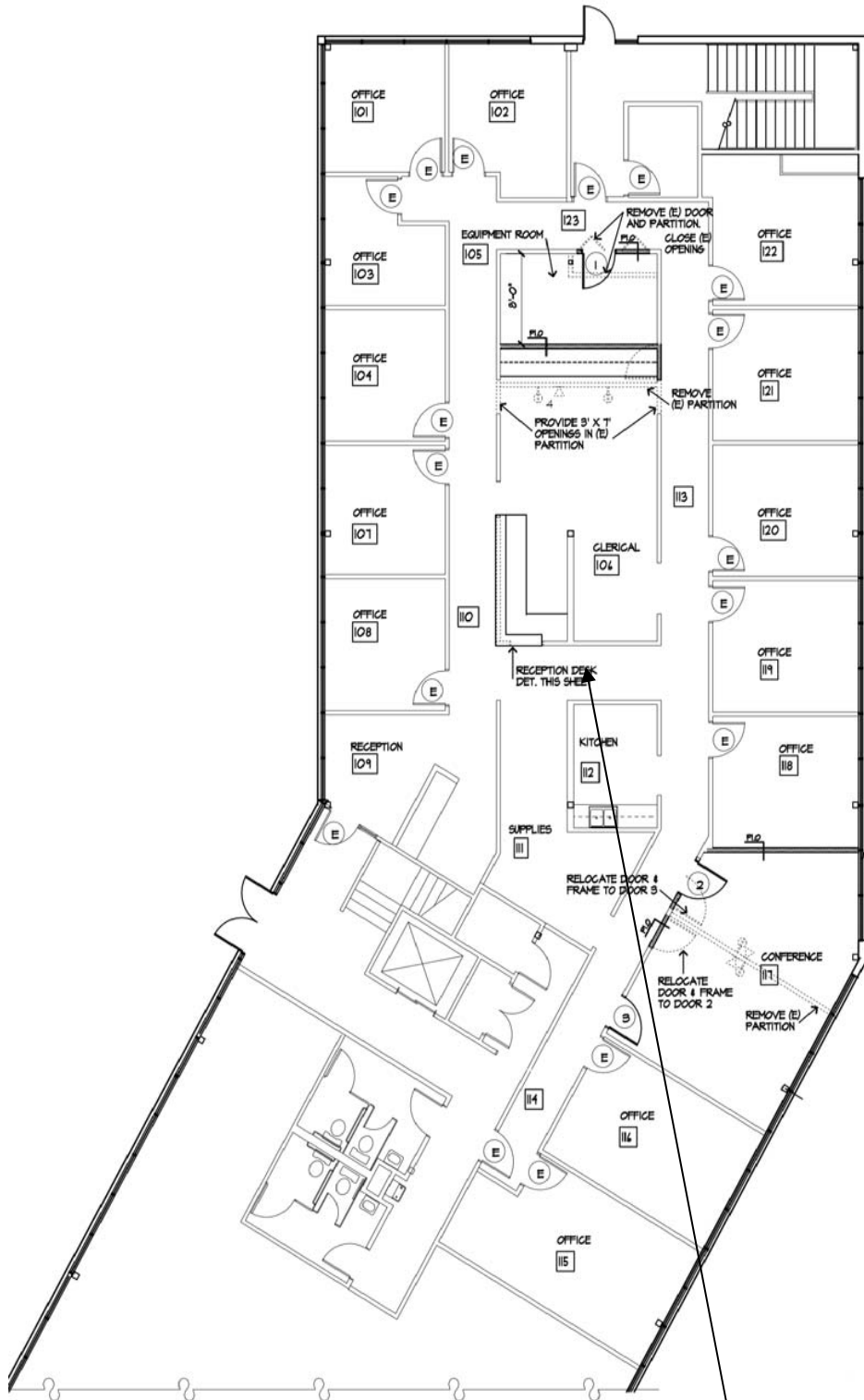
Suite	Square feet	Rate PSF
110	5210	\$18.00—\$21.00 PSF
215	570	\$18.00—\$21.00 PSF
235	635	\$18.00—\$21.00 PSF

Suites available from 440 SF up to 5210 SF.  
View attached floor plan options.

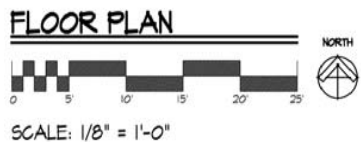
**BARTELL MEITUS**

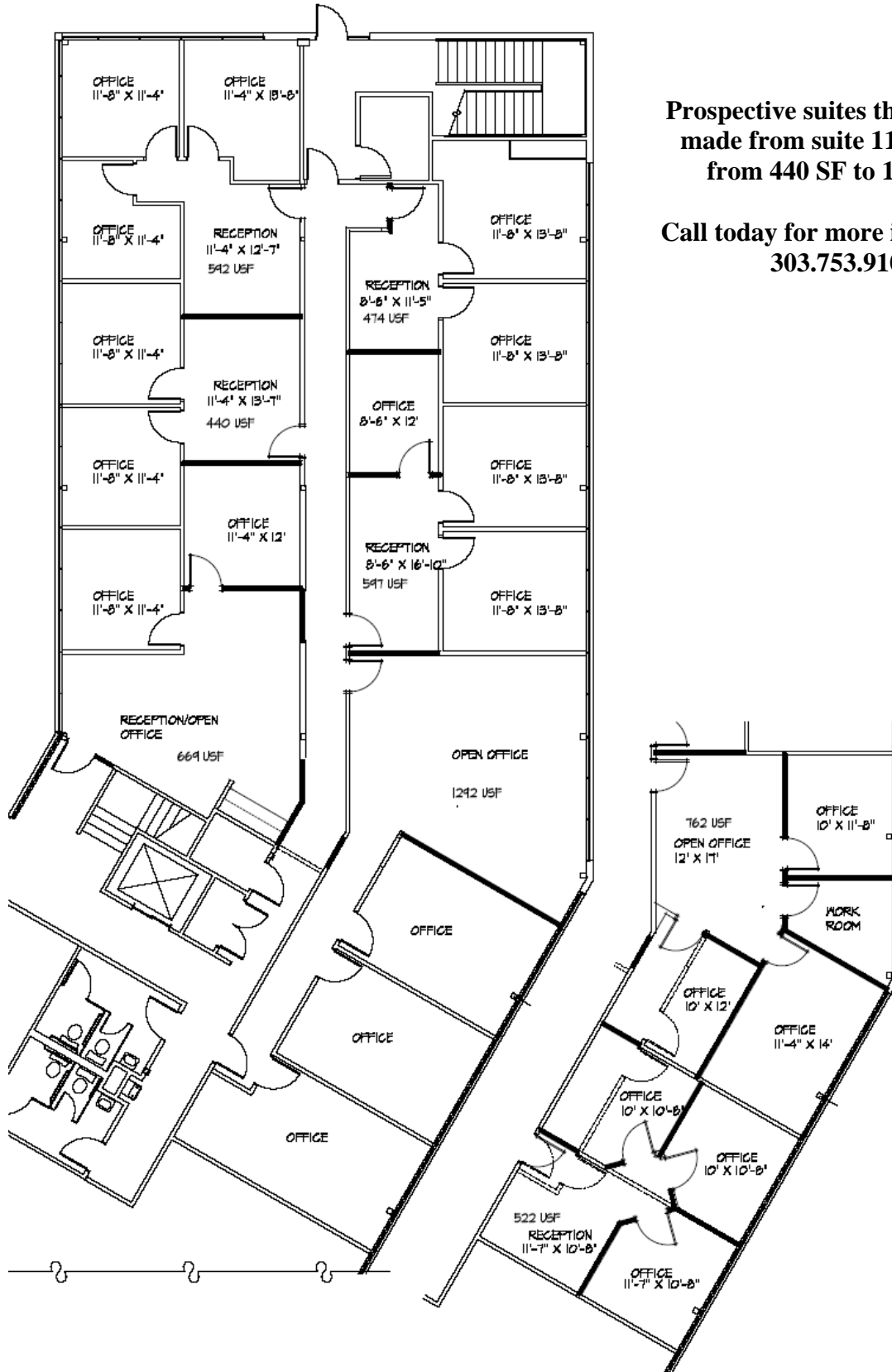
REAL ESTATE

**Dan Bartell • 303.753.9100 • dan@bartellre.com**  
1873 South Bellaire Street, Suite 1525, Denver, Colorado 80222  
303.753.9100 • FAX: 303.753.0026 • info@bartellre.com  
www.bartellre.com



**Suite 110**  
**5210 rsf**

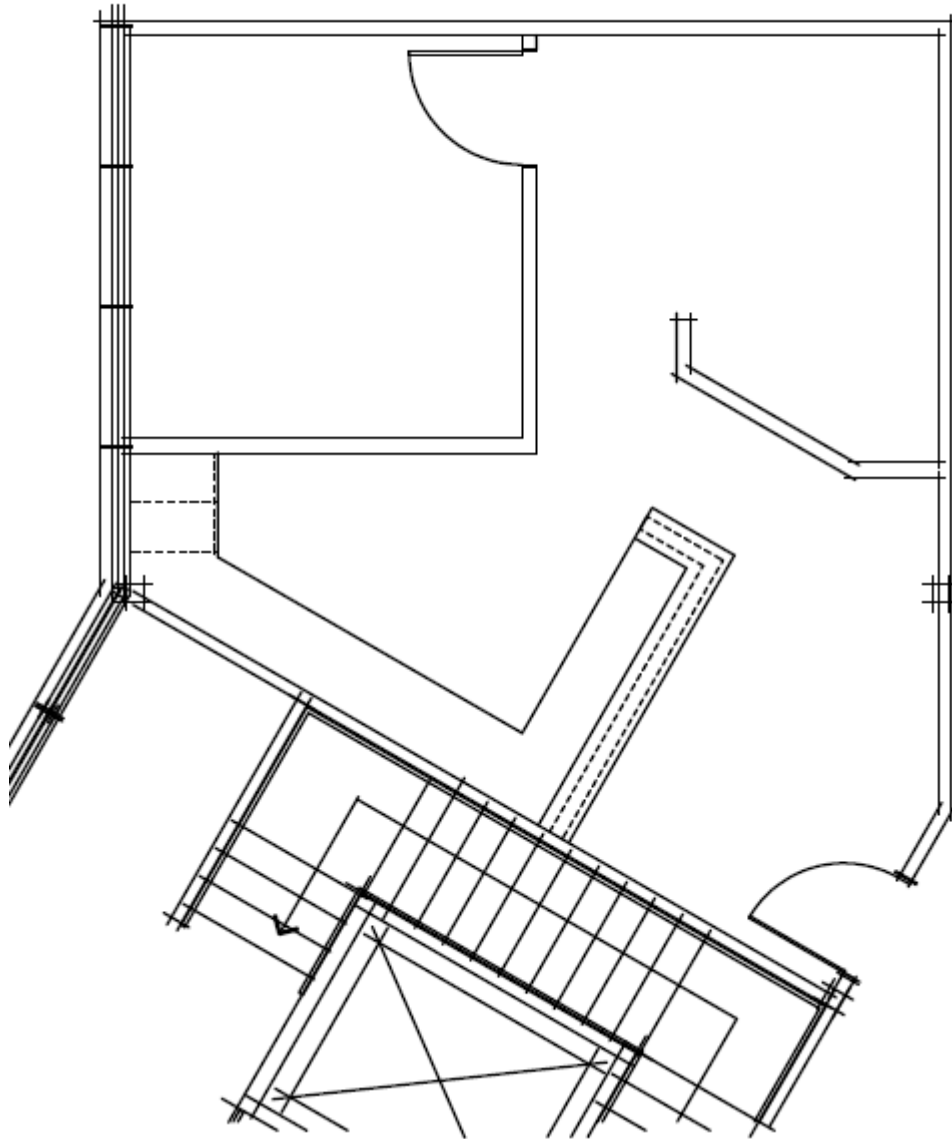




**Prospective suites that could be made from suite 110 ranging from 440 SF to 1261 SF.**

**Call today for more information  
303.753.9100**

**Suite 215**  
**570 SF**



**Suite 235**  
**635 SF**

