

# Asbury Medical Building

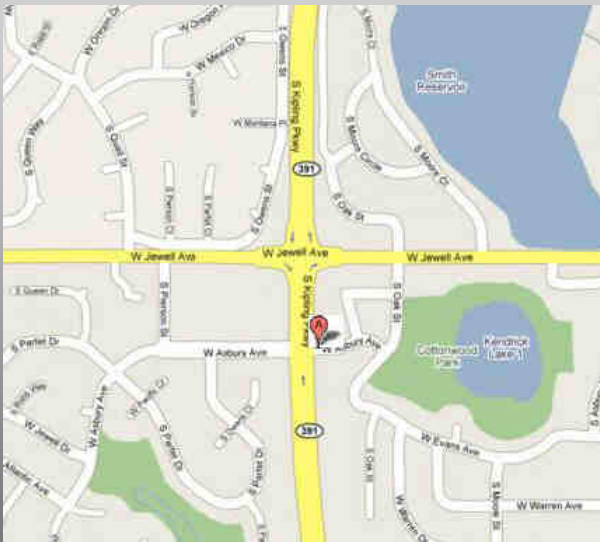


**10881 W Asbury Ave  
Lakewood, CO 80227**

**Office Space for Lease  
\$18.00—\$21.00 Full Service**

## Features:

- 2 Story medical / Office building
- 14,011 Square feet
- Parking Ratio of 4.50 / 1,000 SF
- High Visibility
- Scenic Views of lake & park
- One block East of Kipling & south of Jewell Ave



## Available Units

Suite	Square feet	Rate PSF
110	5210	\$18.00—\$21.00 PSF
220	600	\$18.00—\$21.00 PSF
240	656	\$18.00—\$21.00 PSF

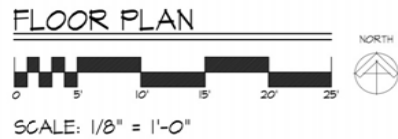
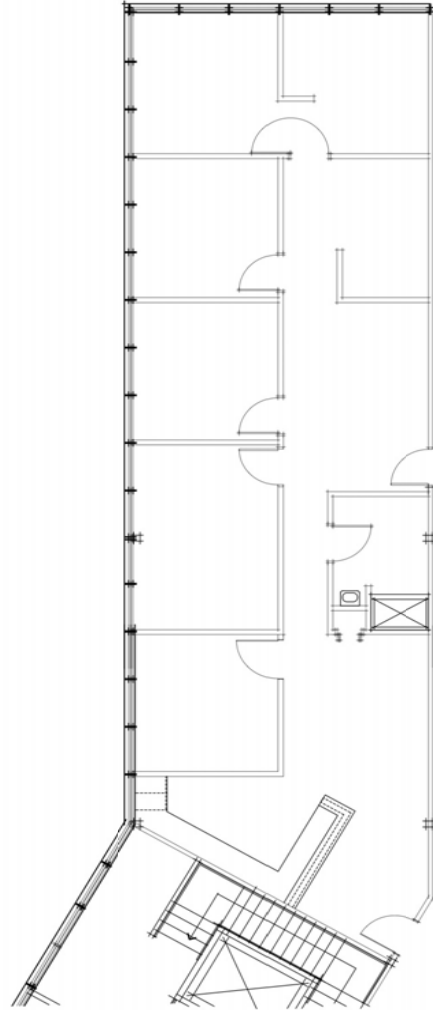
**BARTELL MEITUS**

REAL ESTATE

**Dan Bartell • 303.753.9100 • dan@bartellre.com**  
 1873 South Bellaire Street, Suite 1525, Denver, Colorado 80222  
 303.753.9100 • FAX: 303.753.0026 • info@bartellre.com  
 www.bartellre.com



**Suite 110**  
5210 rsf



**Suite 220, 240**  
600 & 656 rsf