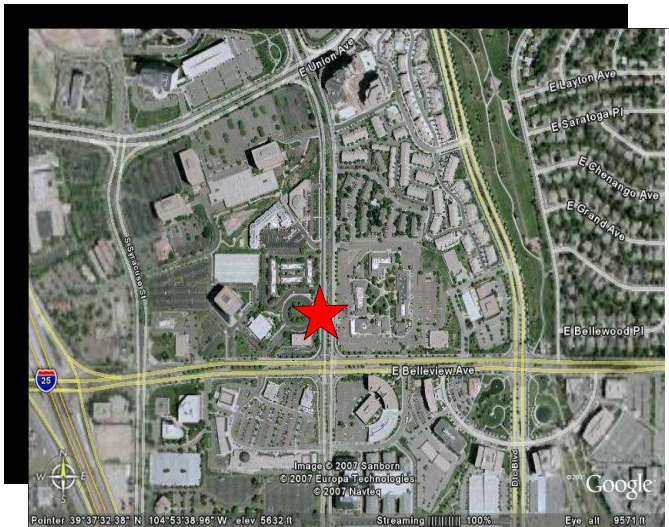


**DTC Executive Park**  
**5031 South Ulster Street**  
**Suite 160**  
**Denver, CO 80237**

**Sublease Term through February 2010**  
**2,410 square feet**  
**at \$10.50 per square foot**



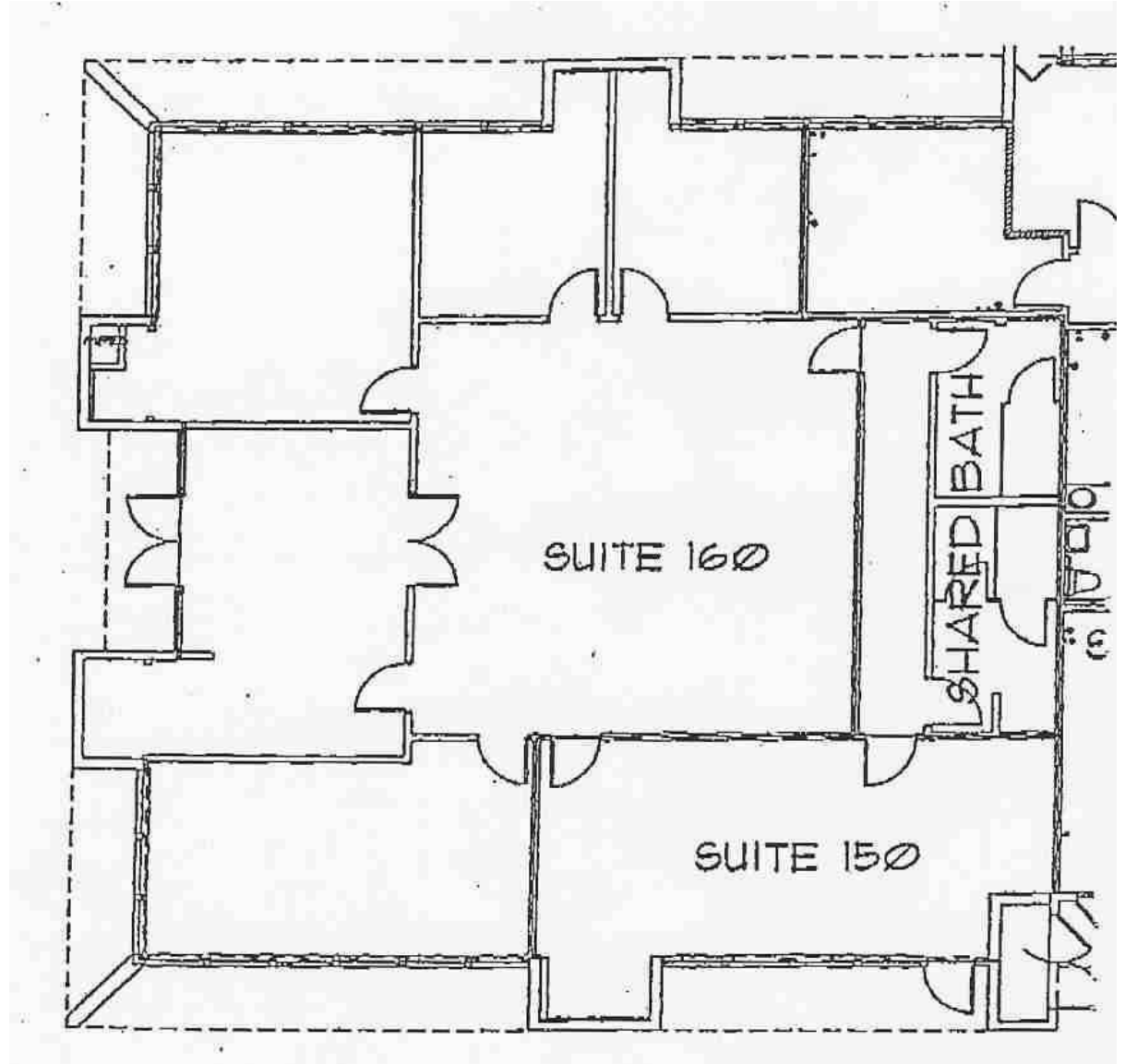
- ◆ Private entrances
- ◆ Walking distance to hotels and restaurants
- ◆ Great access to I-25 and I-225
- ◆ 2004 Base year
- ◆ 8 parking spaces included



For more Information contact:  
**Dan Bartell (303) 753-9100 dan@bartellre.com**  
Or visit our website  
at **www.bartellre.com**

**Sublease Suite 160**

**\$10.50 psf through 2010**



*This information has been secured from sources deemed reliable, but we make no representation or warranties, expressed or implied, as to the accuracy of the information.*