

Citywide Banks Building

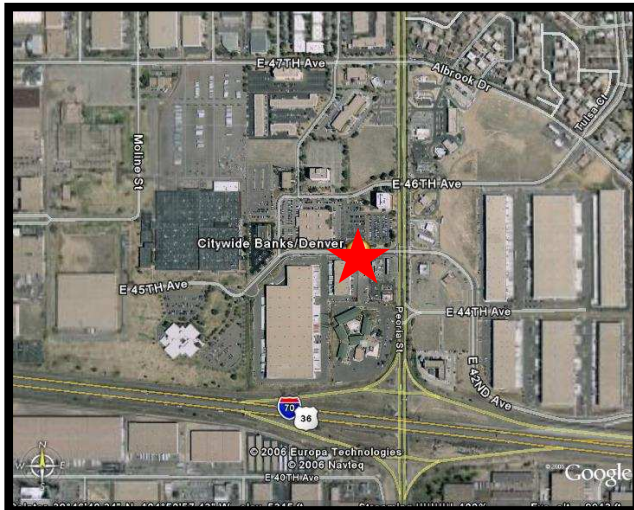
12075 E. 45th Avenue

Denver, Colorado 80239

Suites Available

215	1,205
300	821
310	991
315	1,640

- ◆ **LOW, LOW Lease Rates!**
- ◆ **Best value in the area!**
- ◆ **Custom tenant finish available.**
- ◆ **Minutes to DIA, easy access to I-70 and I-225.**
- ◆ **Unobstructed views!**
- ◆ **Walking distance to restaurants and hotels.**



Lease Rate\$10.50 to \$13.50
per RSF, Full Service Gross

Building Size68,695

Year Built1970, renovation
in 1997

No. Floors.....7

Floor Size Full Floor10,400

Parking Ratio.....5/1,00 SF

**For more
information, visit our website
at www.bartellre.com**

**or contact:
Dan Bartell**

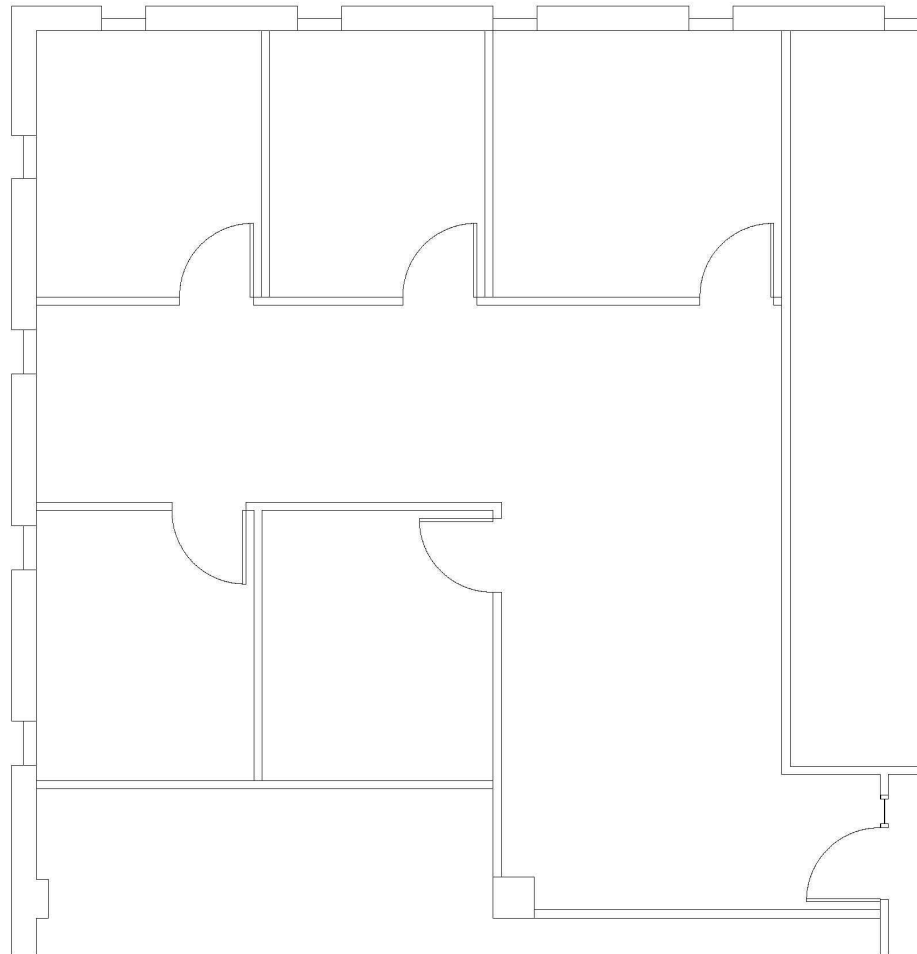
(303) 753-9100

BARTELL

MEITUS

REAL ESTATE

SUITE 215
1,205 R.S.F.

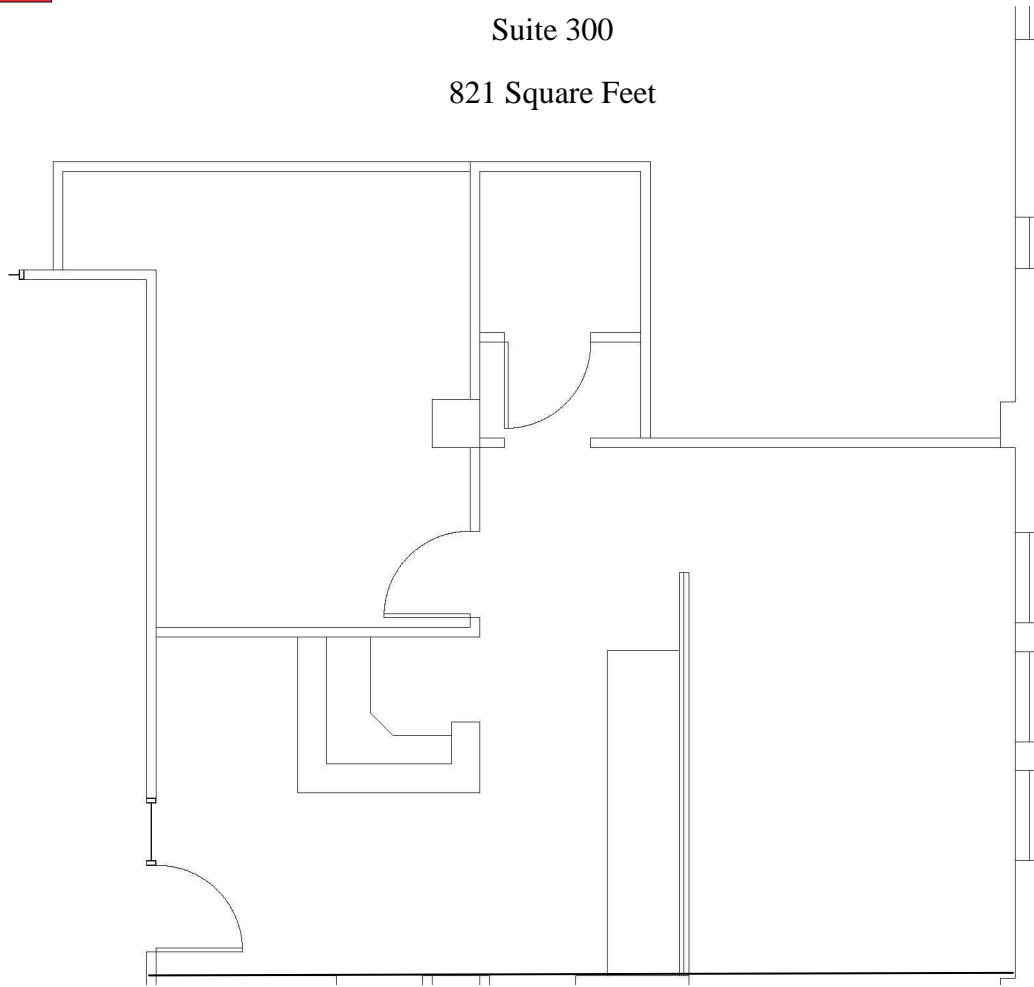


BARTELL

MEITUS

REAL ESTATE

Suite 300
821 Square Feet



B A R T E L L

M E I T U S

R E A L E S T A T E

Suite 310

991 Sq Ft

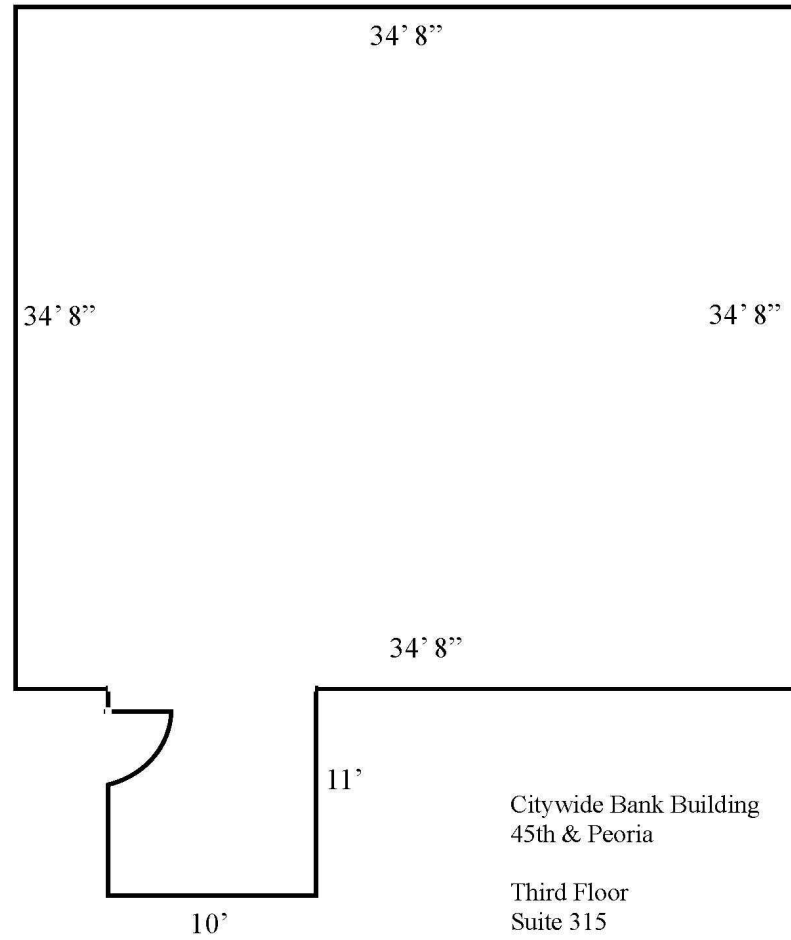
No Space Plan Available at this time.

BARTELL

MEITUS

REAL ESTATE

North ↑



Citywide Bank Building
45th & Peoria

Third Floor
Suite 315

1,640 sf